



## **Mainstreaming Social Performance in Microfinance: Implementing the “double-bottom line”**

Savings and Credit Forum, 2<sup>nd</sup> July 2010

# **Social Performance Reporting by Selected MIVs**

Roland Dominicé, Symbiotics

Presentation no. 9:  
14.05 – 14.15

---

# Symbiotics ESG Rating and Reporting Approach

---

Bern – July 2nd 2010

## Symbiotics | short profile

- **Year of creation:**
  - December 2004: Symbiotics SA Information, Consulting & Services
  - March 2007: Symbiotics Securities SA
  - March 2008: Symbiotics Investment Management SA
- **Total permanent staff:** 32 staff located in Geneva, Cape Town, Mexico City, Singapore

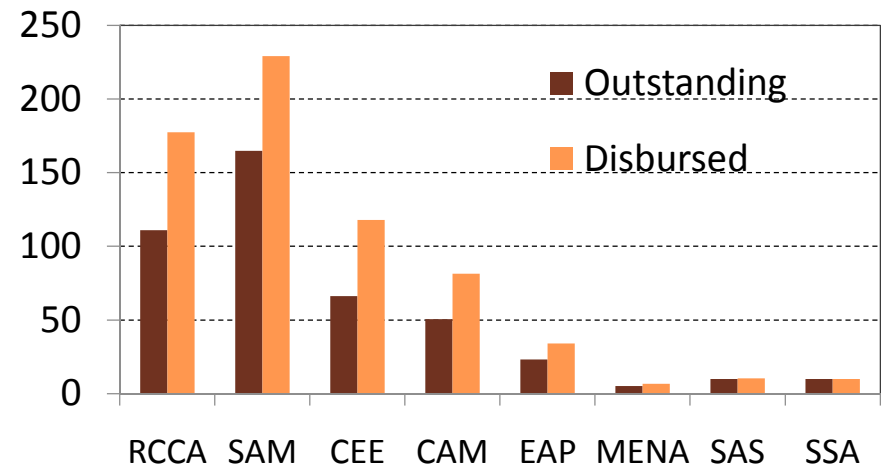
- **Key expertise:**

- Research & Advisory
  - Investment Analysis
  - Investment Services
- Brokerage & Structuring
- Asset Management

- **Portfolio under advisory / management:**

- +680 USD million disbursed since 2005
- +450 USD million under advisory/management
- +130 MFIs received funding





**Regional Focus USD million**



RCCA: Russia, Caucasus & Central Asia  
 SAM: South America  
 CEE: Central & Eastern Europe  
 CAM: Central America, Mexico & the Caribbean

SAS: South Asia  
 MENA: Middle East & North Africa  
 SSA: Sub-Saharan Africa

# Key aspects of social performance and source

Key SP aspects	Key sources
1. Social Governance	<ul style="list-style-type: none"> <li>✓ SPTF/ MIX Social Reporting Format</li> <li>✓ Global Reporting Initiative (UN GRI)</li> <li>✓ Symbiotics own research and field experience</li> </ul>
2. Labor Climate	
3. Financial Inclusion	<h2 style="text-align: center;">Symbiotics social rating</h2>
4. Client Protection	
5. Product Quality	
6. Community Engagement	
7. Environmental Policy	

## When applying social performance indicators

Key SP aspects	Due Dilligence	Monitoring	Reporting
1. Social Governance	X	X	X
2. Labor Climate	X	X	X
3. Financial Inclusion	X	X	X
4. Client Protection	X	X	X
5. Product Quality	X	X	X
6. Community Engagement	X	X	X
7. Environmental Policy	X	X	X

---

## Current and future social performance reporting

---

### ➤ **Current SP reporting:**

- Social responsibility report on each investee/ prospective investee
- Monthly investment manager report, including a set of core social performance indicators
- Symbiotics is not directly responsible for MIVs' social reporting, but some of them use ESG information provided by Symbiotics

### ➤ **Future SP reporting:**

- Creation of an annual reporting form for MFIs to report on qualitative ESG aspects
- Aggregate social rating grades obtained by MFI investees at the investment portfolio level (with the possibility to have grades by ESG dimension)
- Calculate average ESG indicators at the investment portfolio level, in line with CGAP MIV Disclosure Guidelines
- Publication of an annual ESG report for REGMIFA, including both macro level indicators (country and MFI outreach) and micro level indicators (data on end-borrowers financed)